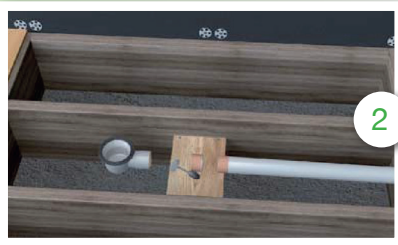


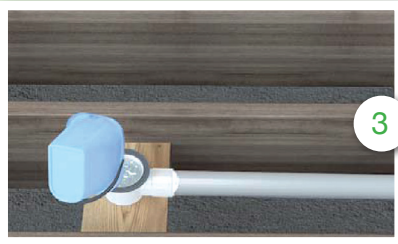
Installation Instructions For Linear Shower Tray



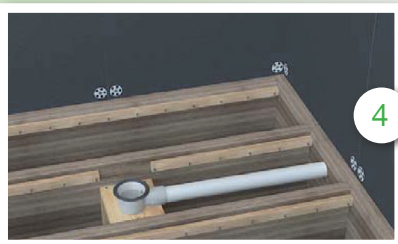
Put shower tray in the correct position and mark around the tray, to establish which section of the floor boards need to be removed, the tray can be recessed.



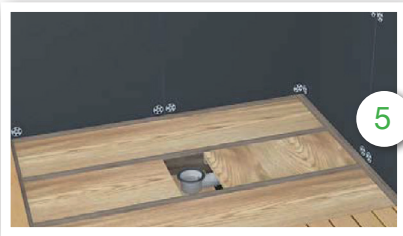
Once the floorboards are removed, Measure and mark where your drain and waste pipe will be fitted.



Cut a piece of plywood to support the drain for drain body, this should be 10mm higher than waste pipe. Connect the drain body to the waste pipe with solvent weld in the usual way. (Always check for leaks before final installation of shower tray).



Fix a batten below the top of the joists.



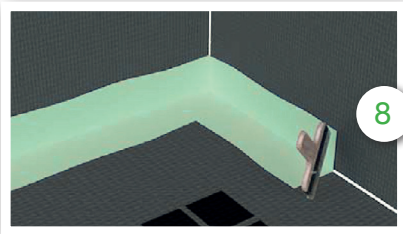
Once you are satisfied with the drainage, place plywood around the drain and fix in position.



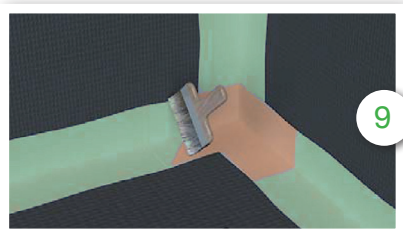
Spread the adhesive evenly over the area where the shower tray is to be installed, being careful to clean away any adhesive on the rim of the trap.



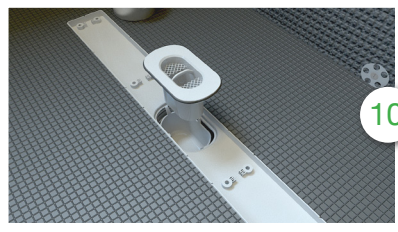
Ensure that the surface is smooth & Level.



Seal all joints (both wall and floor) utilising special waterproof membrane / paste.

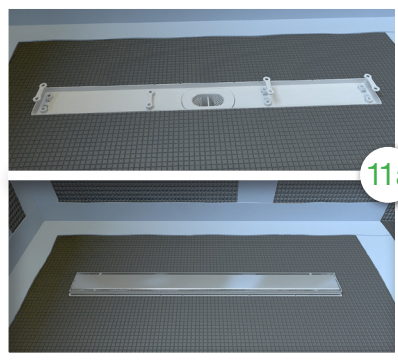


Seal all corners of shower area with inside corner membrane / paste.



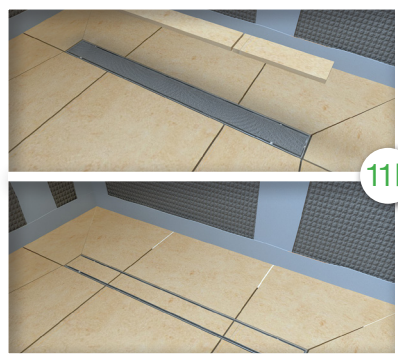
10

Assemble other drain components



11a

If you're not using a tile on grate, adjust the height of the stainless steel support utilising the height adjustment spacers, each space will increase the height by 1.5mm. Depending on the number of spacers used, use either the long or short screws to fix the stainless steel support to the tray



11b

If you're using a tile on grate, the height of the stainless steel support can be adjusted utilising the height adjustment spacers, but the inner height of the tile on the grate is fixed (13mm). Please ensure that you use suitable tiles for the grate and the shower tray.

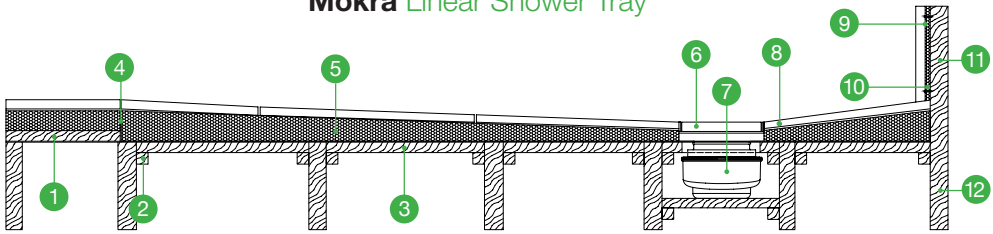


12

The shower base is now finished and can be tiled.

Installation Section Detail For Wooden Floor

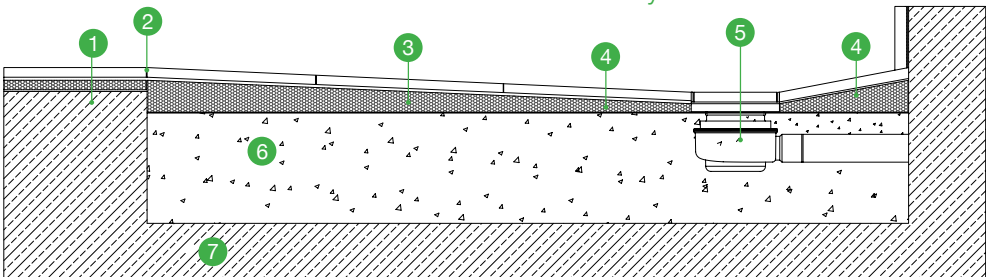
Mokra Linear Shower Tray



- | | | |
|-------------------------|------------------------------|-----------------------------|
| 1 Floor board 18mm | 6 Stainless steel grate | 11 Wooden wall construction |
| 2 Support for PLY board | 7 Linear Shower drain body | 12 Floor joist |
| 3 PLY board 18mm | 8 Tile | |
| 4 Waterproof paint | 9 Washer and screw | |
| 5 Linear shower tray | 10 backer board (10/12/20mm) | |

Installation Section Detail For Concrete Floor

Mokra Linear Shower Tray



- | | |
|--------------------|----------------------------|
| 1 Screed | 5 Linear Shower drain body |
| 2 Waterproof paint | 6 Levelling screed |
| 3 Shower tray | 7 Concrete floor |
| 4 Slope | |